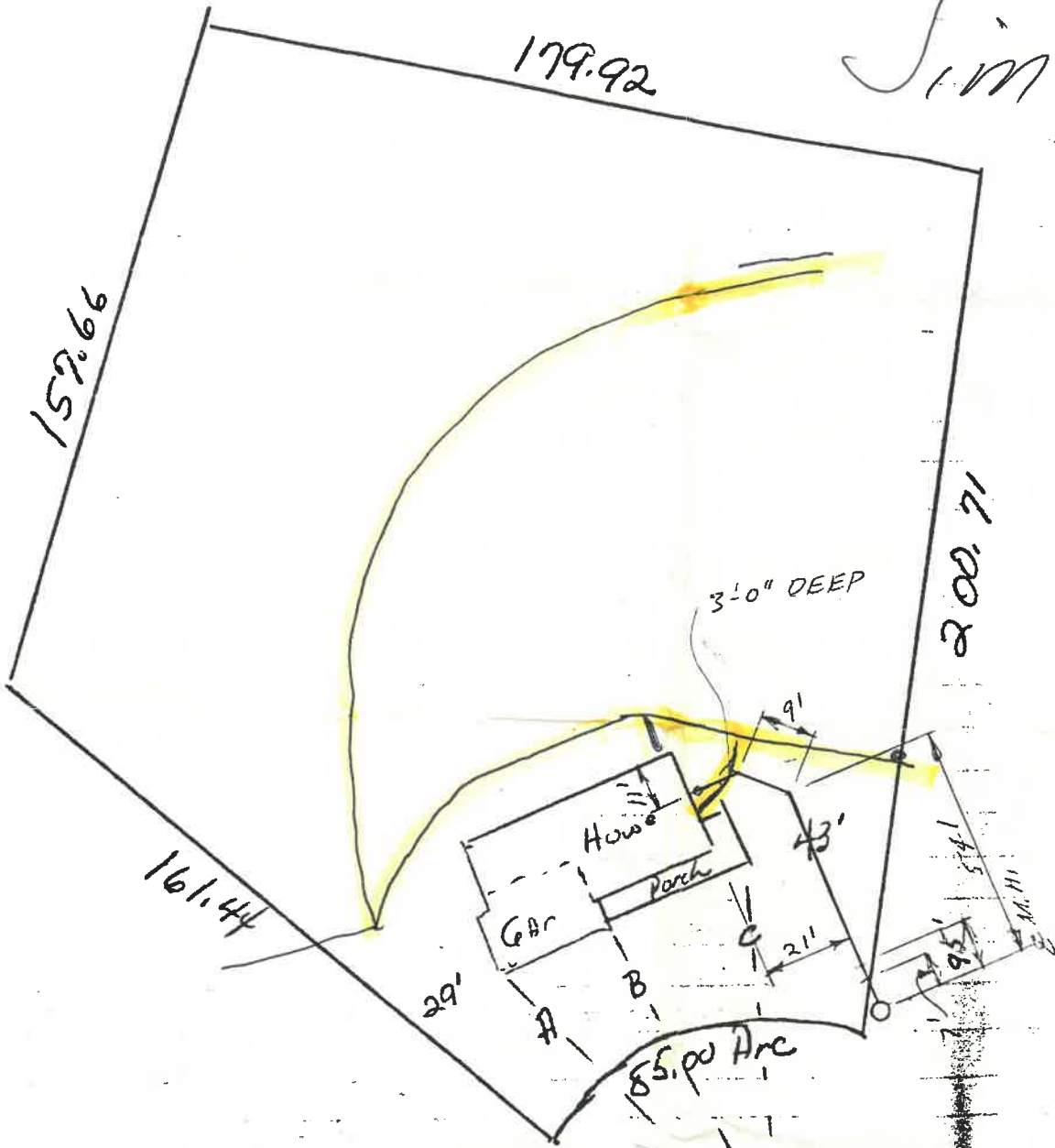
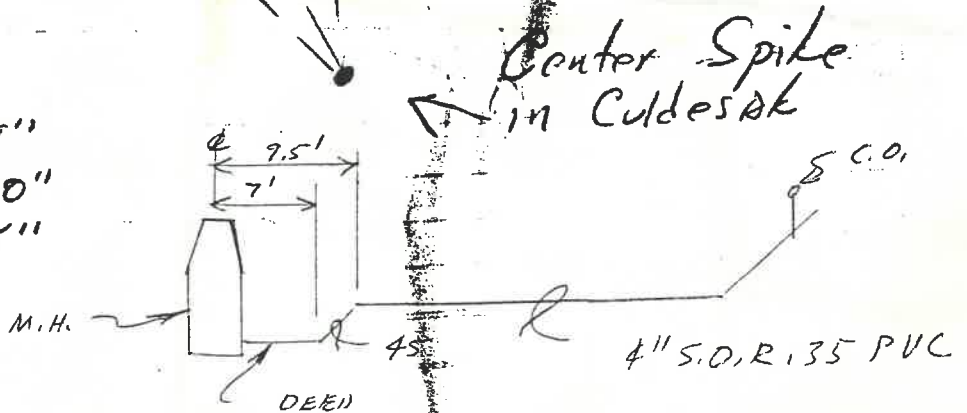


Parcel 2 Old Creek Drive
 1892 A. Ron Zachrich Blvd
 195 Old Creek

Jim Hoops



- Dimension A - 91'8"
- B 85'0"
- C 88'5"



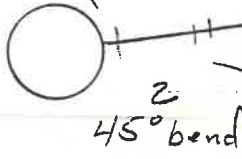
191

Old Creek Drive



400 FT in M.H. depth to 8 FT depth

Existing SAN. Manhole



450 bend

450 bend @ 4 FT depth

30 FT of 4"

39 FT.

GARAGE

G101

